



## ABBB-79 3 SOLID DOOR BACK BAR

INCLUDE 3 YEAR PARTS + LABOR / 5 YEAR COMPRESSOR WARRANTY

### Dimensions

Exterior Dimensions (WxDxH)	80.79" x 26.30" x 37"
Interior Dimensions (WxDxH)	
Capacity (cu. ft.)	27.9 cu. ft.
Weight	302 lbs
Packaging Dimensions (WxDxH)	

### Construction

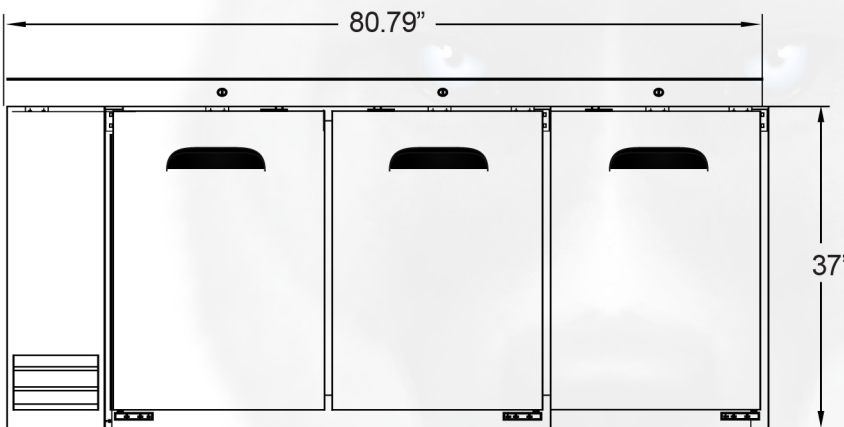
Exterior Material	EGI(Electro Galvanized Iron) + Black Embossed Painting
Interior Material	Galvalume
Insulation Material	Cyclopentane
Shelf Material	SWRM-B + PE Coating
Shelf Load Capacity	132 lbs/EA
# Shelves	6

### Cooling

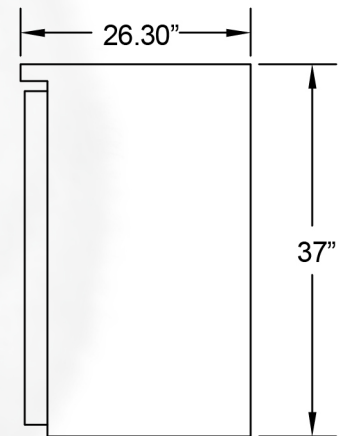
Temperature Range	32° - 41° F
Refrigerant	R290
Maximum Ambient	95° F
Temperature Rating	N Class
Defrosting	Automatic
Temperature Display	Analog Thermometer
Temperature Controller	Thermostat
H/P	3/8

### Electrical

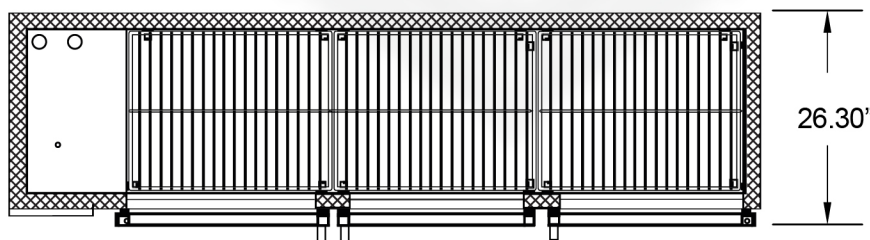
Voltage	115
Amps	3.5A
Hz	60
Phase	1



Front View



Side View



Top View

